



Ministry of Civil Defence
& Emergency Management
Te Rākau Whakamarumarū

Civil Defence Emergency Management

Presenter:
Mark Constable

17 October 2012

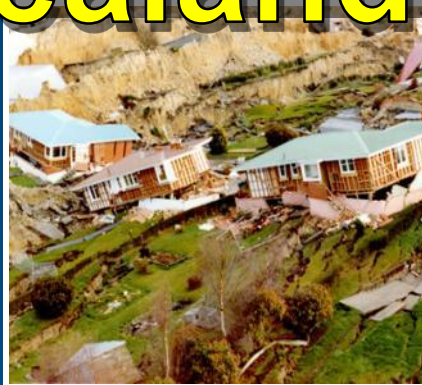
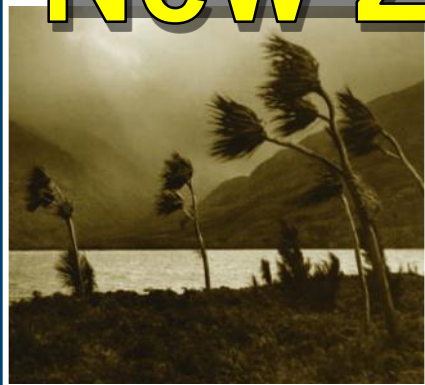
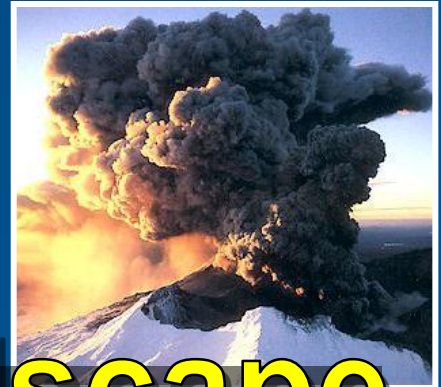
**Chartered Institute of
Logistics and Transport
Annual Forum**



Overview

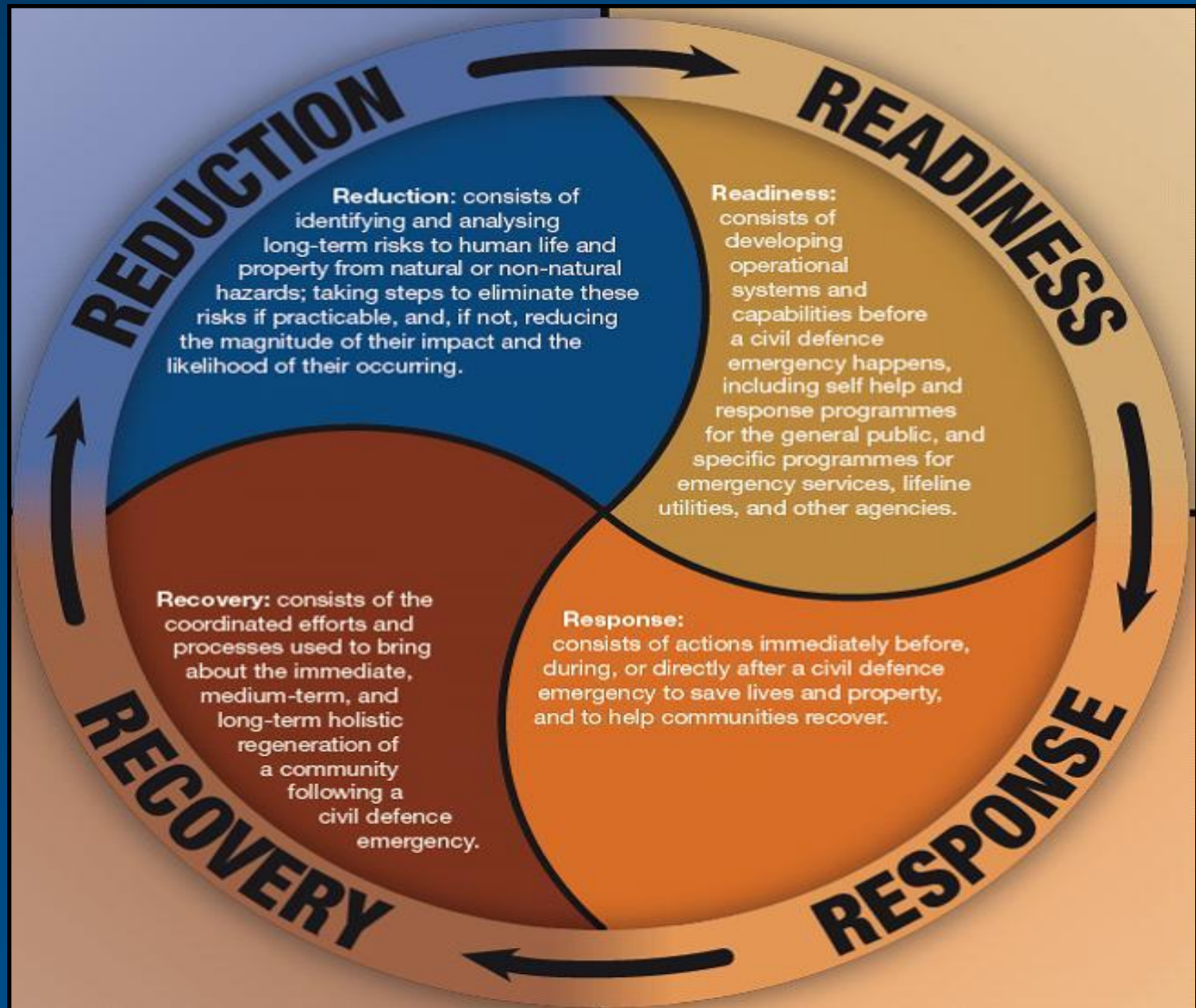
- Raise awareness of CDEM
- What logistics CDEM undertakes
- How CDEM ties in with transport logistics
- How transport logistics companies can be prepared

New Zealand Hazardscape



What is Civil Defence Emergency Management?







Ministry of Civil Defence & Emergency Management

Te Rākau Whakamarumaru

Our role is to:

- provide strategic policy advice
- ensure NZ's capability to manage disasters
- ensure a co-ordinated approach to planning for reduction, readiness, response, and recovery
- provide support to sector
- manage central government response and recovery functions

16 Regional CDEM Groups

A consortia of:

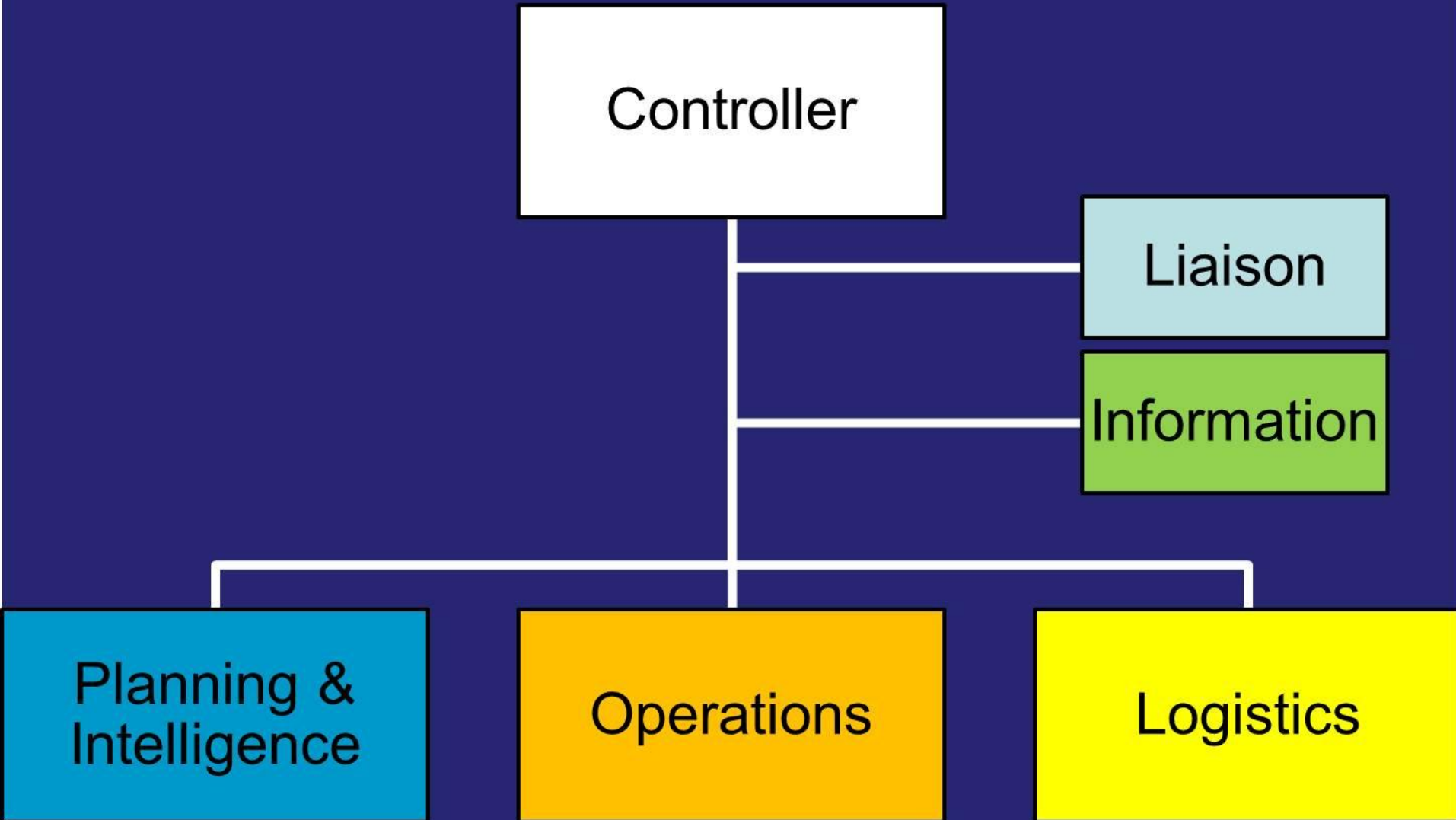
Regional Council
Local Authorities
Emergency Services
Welfare agencies
DHB
Lifeline Utilities



Response Hierarchy



Coordinated Incident Management



CDEM Logistics

Geography

National

Scale

Regional

Cost

Local

- Offers of assistance
- Procurement
- Cargo Transport
- Pax Transport
- Accommodation

CDEM Logistics Framework

NCMC

- Military coordination
- International procurement
- National staging area
- Transportation arrangements

ECC

- Regional staging area
- Dispatch to locals

EOC

- Local staging area
- Tasking resources/personal
- Provision of supplies

Christchurch Earthquake Response

- The National Crisis Management Centre became a hub for coordinating major logistics / offers of assistance:
 - Flights (for people)
 - Port-a-loos
 - Chemical (camp) Toilets
 - Fencing
 - Freight – Generators, sucker/jet-trucks

So what *don't* we have?



CDEM use of Transport Logistics

- CDEM may:
 - become your customer (on the day)
 - set up pre-event arrangements for specific jobs
 - establish general pre-event arrangements

How would your business cope
with serious disruption?



What can you do to prepare?

Within your organisation it is important that:

- risk management and continuity planning are promoted as core business
- cross-organisation communications and relationships are established to support your organisation's survival
- senior management buy-in is obtained

Your Business Should:

- Establish procedures to ensure continuity of business
- Interact with external agencies and exercise plans
- Have an ability to reconfigure operations to cater for loss of assets/resources
- What are your customers expectations of you in an emergency?
- Plan for communications during emergencies

Business Continuity

- Develop business continuity plans
- Incorporate emergency/crisis plans into BCPs
- Make risk management part of BAU
- Ensure vendor interruptions have limited affects
- Plan, train, exercise, and equip

Do you know what your local hazards are?



Reduction and Readiness

- Talk to local CDEM to understand the full range of hazards that could impact on your operation
- Undertake mitigation works on critical fixed sites and infrastructure
- Plan for the consequences of hazards
- Know where to get information about events *before* an emergency
- Help staff prepare themselves (and their families)

Some key points

- It's in the planning (not the plan)
- Established relationships are paramount
- **Value of mitigation** (\$1 spent, saves \$4)
- Your staff are vital to your response – make sure they are ready



Ministry of Civil Defence & Emergency Management

Te Rākau Whakamarumarū

www.civildefence.govt.nz
www.getthru.govt.nz